

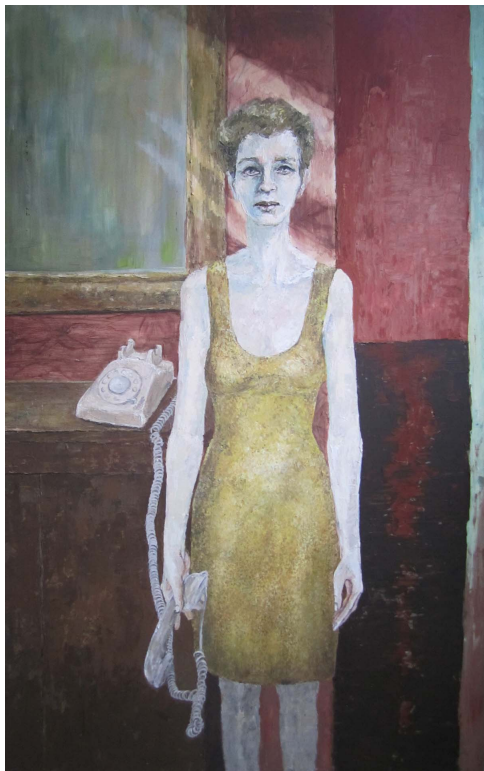


## On a Silver Platter

Meet the world of Irma May, a fictional character that I created to act as a protective shield, through which I can share my innermost experiences, opinions, and attitudes. Irma is the voice of my subconscious.

“On a Silver Platter” is one of a triptych of her creation story of overcoming with strength, acceptance, and zest. On the first of the triptych Irma receiving troubling news, on the second one she is reflecting and processing. Finally, we arrive to “On a Silver Platter”, where she has willingly more than accepted her situation.

The feast she is hosting is symbolic; all of her that is essential for survival has been taken by Life’s challenges, yet more is demanded. Instead of reacting with terror, she is confronting the world of the price it claimed. Setting a fancy table is inviting, by which we notice not only her acceptance, but also as if she said “...needing yet another piece? I will be okay, will You?”



“When her heart fell into her stomach”



“There was once”