

April 15, 2004  
For Immediate Release

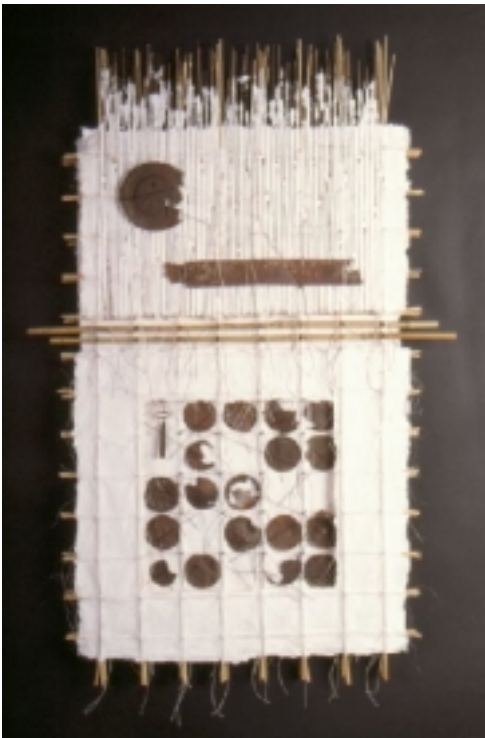
Contact: Sonja Kruitwagen - 773-489-8900



## Connections

### WHAT: Fiber Constructions by Ilse Bolle

This exhibition includes over fifteen fiber constructions by Chicago artist Ilse Bolle. Her sculptural works are collected internationally and currently showing in the Clay and Fiber Gallery in Taos. Her work is held in private and corporate collections, has received several awards, and has been published in Fiberart Design Books III, IV and V along with professional magazines.



**Closure II' 2004**  
mixed media fiber construction by Ilse Bolle

Ms. Bolle received a B.S. in Art Education and a M.S. in Studio Art with a concentration in fibers from Northern Illinois University. During her graduate studies, she concentrated on elevating the craft of basketry to the art of nonfunctional and sculptural forms.

#### Artist Statement

In my work I continuously explore ways to achieve a relationship between flat planes and enclosed space to create form. I combine a love for simplicity with the energy of a strong form, emphasized by the order of the grid structure. I appreciate natural materials for their warmth and subtlety of monochromatic color and their richness in textures. I enjoy slight, tactile imperfections and often emphasize them for their organic beauty. I value the past and its remains, for they provide insight and connections to the present.

--Ilse Bolle

Work from this exhibition can be viewed online at [www.womanmade.org/soloshows.html](http://www.womanmade.org/soloshows.html)

**WHEN:** May 21 - June 17, 2004  
**Opening Reception:** Friday, May 21<sup>st</sup>, 6 - 9 pm  
**Gallery Hours:** Wednesday - Friday 12 - 7 pm, Saturday & Sunday 12 - pm

**WHERE:** Woman Made Gallery, 2418 W. Bloomingdale Ave., Chicago, IL 60647  
(Two blocks north of North Avenue, ½ block West of Western)

**HOW MUCH:** Free and open to the public

**FOR MORE INFORMATION:** 773-489-8900 or [sonja@womanmade.org](mailto:sonja@womanmade.org)

###